

The seal of the Ruprecht Karls University of Heidelberg is a circular emblem. It features a seated figure, likely a saint or scholar, holding a book and a heart. The figure is surrounded by a complex, ornate border with Gothic architectural elements and Latin text. The seal is rendered in a light red color on a dark red background.

Ruprecht Karls University of Heidelberg

A Short Introduction

Philipp Löffler, University of Heidelberg,
English Department

625 Jahre
Ruperto Carola



The City of Heidelberg

625 Jahre
Ruperto Carola

Facts and Figures



- founded around 500 AD
- Today: about 145000 people
- Relatively small city – But: rich diversity of urban spaces →14 districts distributed in 6 major sectors in the City
- located in what Germans call the ‘Rhine-Neckar Delta’
- Reliably good weather (warmest German city in 2009)
- One of the most popular tourist destinations in Germany (historic old city, castle, River Neckar etc.)

Geographical Location



Beautifully located in Germany's Southwest and in driving distance to:

- Frankfurt a.M. (Int. Airport) (1h)
- Mannheim (20 min)
- Karlsruhe (30 min)
- Freiburg (2h)
- Stuttgart (1h)
- Munich (3h)
- Paris (4h train ride)
- Berlin (6h)

Images and Impressions



Images and Impressions



Images and Impressions



Images and Impressions



The seal of the University of Heidelberg is a circular emblem. It features a seated figure on the left, likely a saint or scholar, holding a book. To the right, a kneeling figure is shown in a gesture of prayer or offering. The background of the seal is filled with intricate Gothic architectural details, including pointed arches and tracery. A Latin inscription is visible around the perimeter of the seal.

The University of Heidelberg

625 Jahre
Ruperto Carola

Campus

Campus Altstadt Humanities and Social Sciences



Campus Neuenheimer Feld Natural Sciences



Campus Bergheim Political Sciences, Business School and Sociology



12 Departments/Faculties

1. Department of Theology
2. Department of Law
3. Medical School of Heidelberg
4. Medical School of Mannheim
5. Department of Philosophy
6. Department of Modern Languages
7. Department of Economics and Social Studies
8. Department of Behavioural and Cultural Studies
9. Department of Mathematics and Computer Science
10. Department of Chemistry and Earth Sciences
11. Department of Physics and Astronomy
12. Department of Bio Sciences

Facts and Figures

Students, Staff, Finances

Students (WS 10/11): 28,625

International Students (WS 10/11): 5,175 (18.1%)

PhD graduations (2010): 1,159

Habilitations (2010): 96

Total number of staff members (1.12.2010): 12,812

University, not including HD Med School: 7,553

Total number of Professors: 418

Total academic staff: 5,126

Total Subsidies and Funding (2010): 579.2 Mio. EUR

University, not including HD Med School: 302.1 Mio. EUR

Third-Party Funding (2010): 193.5 Mio. EUR

University, not including HD Med School: 96.0 Mio. EUR

International Rankings 2010



QS World University Ranking

ranked 1 in Germany
ranked 14 in Europe
ranked 51 globally

Times Higher Education Ranking

ranked 3 in Germany
ranked 18 in Europe
ranked 83 globally

Shanghai Ranking of World Universities

ranked 3 in Germany
ranked 16 in Europe
ranked 63 globally

CHE Rankings

Centre for Higher Education Development (CHE) ExcellenceRanking

2010: In a Europe-wide comparison of the natural sciences focusing on biology, chemistry, physics and mathematics, Heidelberg's departments belong to CHE's "Excellence Group."

CHE Research Ranking 2009: Heidelberg University is the only institute of higher education in Germany to be ranked in the so called "Spitzengruppe" ("Peak Performers") within the natural sciences and medical disciplines.



Campus Bergheim



Uniplatz and 'Alte Aula'



University Main Library



English Department



Uniplatz and 'Neue Aula' (Main Lecture Hall Building for the Humanities)



Historic Old City and 'Neuenheimer Feld'



Alte Aula (Old University Hall)



The Best in Germany

2010: First place in the renowned Bertelsmann Foundation BIX Library Rankings

Textbooks from American Studies to Zoology, with everything in between, including law and medicine

The library protects and maintains centuries-old manuscripts, including the most valuable manuscript in Germany, the *Codex Manesse*

University Library



Facts and Figures

2,000 000 Visitors per year

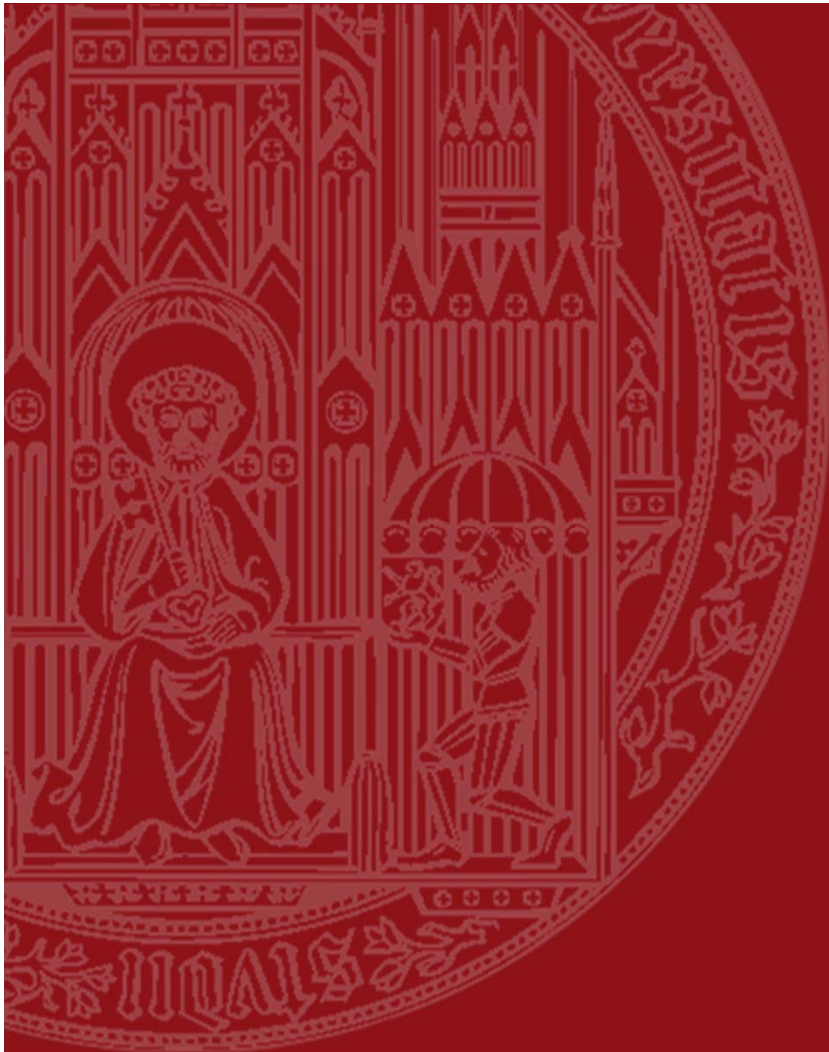
1,800 000 Loans per year

157 Members of staff

3,200 000 Books

53,000 E-Journals

2,000 Databases



Research

625 Jahre
Ruperto Carola

From an „Universitas“ to the ‘Comprehensive University of the Future’

UNIVERSITÄT
HEIDELBERG
Zukunft. Seit 1386.



Oldest German university
(founded 1386)

10 Nobel Prize-winning professors
have taught or conducted their
research at Heidelberg University

55 Nobel Prize winners' names
are associated with either
Heidelberg University or the city of
Heidelberg

Today: one of the 9 German “Elite
Universities” (‘German
Universities Excellence Initiative’)

625 Jahre
Ruperto Carola

Excellence Initiative – 1st Phase

Institutional Strategy: ‘Realizing the Potential of a Comprehensive University’

Clusters of Excellence

- Cellular Networks
- Asia and Europe in a Global Context

Graduate Schools

- Heidelberg Graduate School of Fundamental Physics
- Hartmut Hoffmann-Berling International Graduate School of Molecular and Cellular Biology
- Heidelberg Graduate School of Mathematical and Computational Methods for the Sciences



Humanities



Medicine



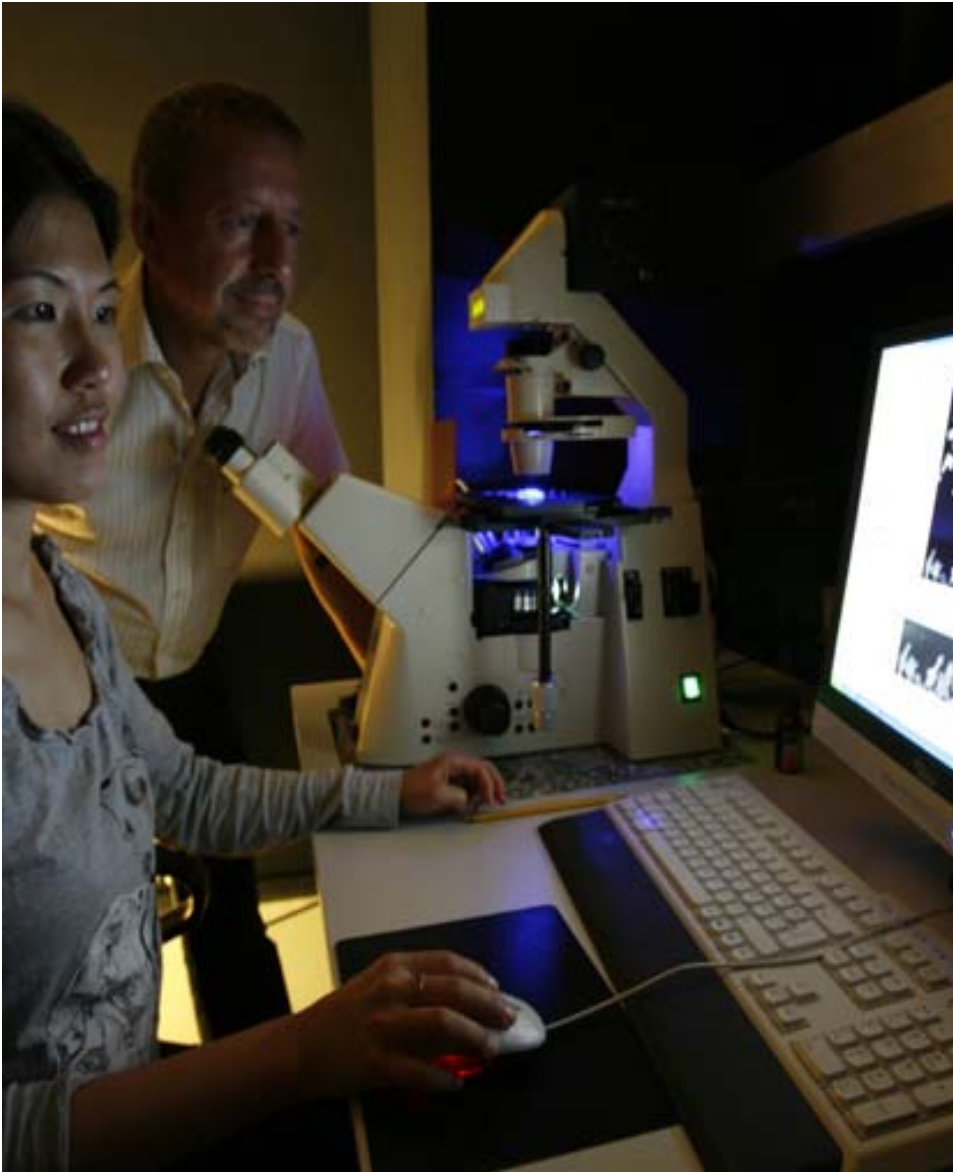
Natural Sciences



Social Sciences

Heidelberg –
Comprehensive
University
of the Future

Facts and Figures



Research

- 16 Collaborative Research Centres
(German Research Foundation – DFG)
- 9 Research Training Groups (DFG)
- 19 Cooperation Agreements with
Non-University Research
Institutions
- 13 Projects in Cooperation with the
Academy of Sciences
- 13 ERC Grants
 - 8 *Starting Grants*
 - 5 *Advanced Grants*

Bachelor's and Master's Programmes



62 Bachelor of Arts programs

45 *dual-subject bachelor's programs*

17 *single-subject bachelor's programs*

72 Master of Arts programs

53 *consecutive master's programs*

19 *non-consecutive/continuing education master's programs*

29 Teaching/Education programs

5 *Staatsexamen (State Examination)*

The seal of the University of Heidelberg is a circular emblem. It features a seated figure on the left, likely a saint or scholar, holding a book and a heart. To the right, a kneeling figure offers a bowl. The background is filled with Gothic architectural elements like spires and windows. A Latin inscription runs along the top inner edge, and a smaller one is at the bottom.

As an Exchange Student

(with a Literary Studies background)

625 Jahre
Ruperto Carola

Student Life in Heidelberg



Bundesarchiv, B 145 Bild-F079105-0005
Foto: o. Ang. | Juni 1955

- Active, international atmosphere
- Every fifth resident of Heidelberg is a student
- Extraordinary support through Heidelberg Student Services (Cafeterias, Housing, BAföG, etc.)
- Free Language Courses at the University after arrival (March/Sept.) on all levels of proficiency

Department for German Languages and Literatures

UNIVERSITÄT
HEIDELBERG
Zukunft. Seit 1386.



Modern and Contemporary
German Literatures

Linguistics

Old/Medieval German
Languages/Literature

Editorial Sciences

→ <http://www.gs.uni-hd.de/>

625 Jahre
Ruperto Carola

Department for German as a Foreign Language (Institut für Deutsch als Fremdsprachenphilologie)

UNIVERSITÄT
HEIDELBERG
Zukunft. Seit 1386.



Linguistics

Literature

Cultural Studies

Applied Linguistics

Communication/Media Studies

→ <http://www.idf.uni-heidelberg.de/>

625 Jahre
Ruperto Carola



**-International Research/Study Institute
(Public/Private Partnership)**

-Affiliated with 6 University Faculties

-B.A., M.A., PhD in:

- American Literature
- Geography
- History
- Musicology
- Philosophy
- Political Sciences
- Law
- Theology
- Sociology
- Economics

→ http://www.hca.uni-heidelberg.de/index_en.html

Zeughaus Cafeteria at the Marstall



The Cafeteria of the Year 2011

In a nation-wide student survey, the Zeughaus Cafeteria at the Marstall ranked first in the categories 'taste', 'service' and 'food diversity'.

2,100 dishes daily

The cafeteria is also a bar, a club and an event location hosting large numbers of special events.

Extra-Curricular Activities



- Sports (Cycling, Hiking, Rowing ect.)
- Literature and Culture (D.A.I., Public Lecture Series, Theatre in HD, Mannheim, or Stuttgart)
- Music (Classical and Jazz)
- Beer Gardening/Restaurants
- Reasonably Prized Excursions (e.g. Maulbronn, Freiburg, Tübingen, Stuttgart, Nuremberg, Munich, Strasbourg, Paris Berlin/Dresden, Weimar, ...)

Questions?

→ **Dr. Philipp Löffler**

University of Heidelberg/English Department
philipp.loeffler@as.uni-heidelberg.de
loffler@uw.edu

→ **Elisabeth Trnka-Hammel**

University of Heidelberg
Student Exchange Coordinator
International Relations Office
trnka@zuv.uni-heidelberg.de

Thank You for Your Attention !!